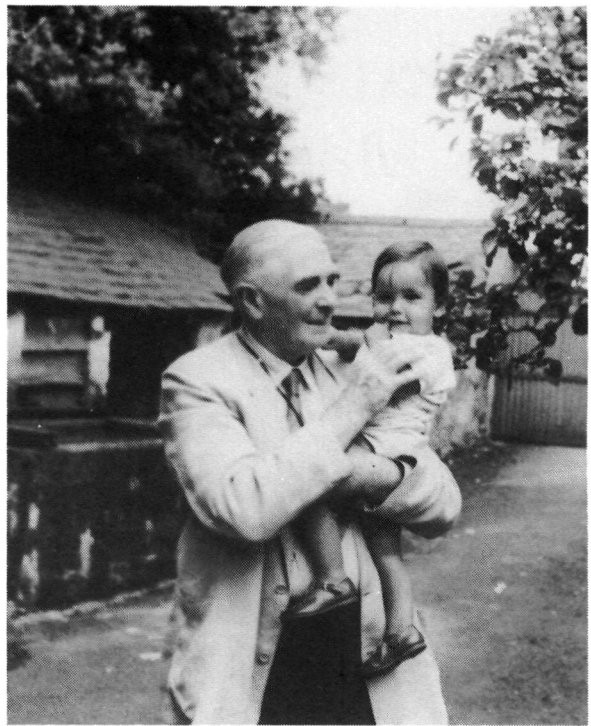


# The Photographs of Robert Harvey



Robert Harvey with his grandson.

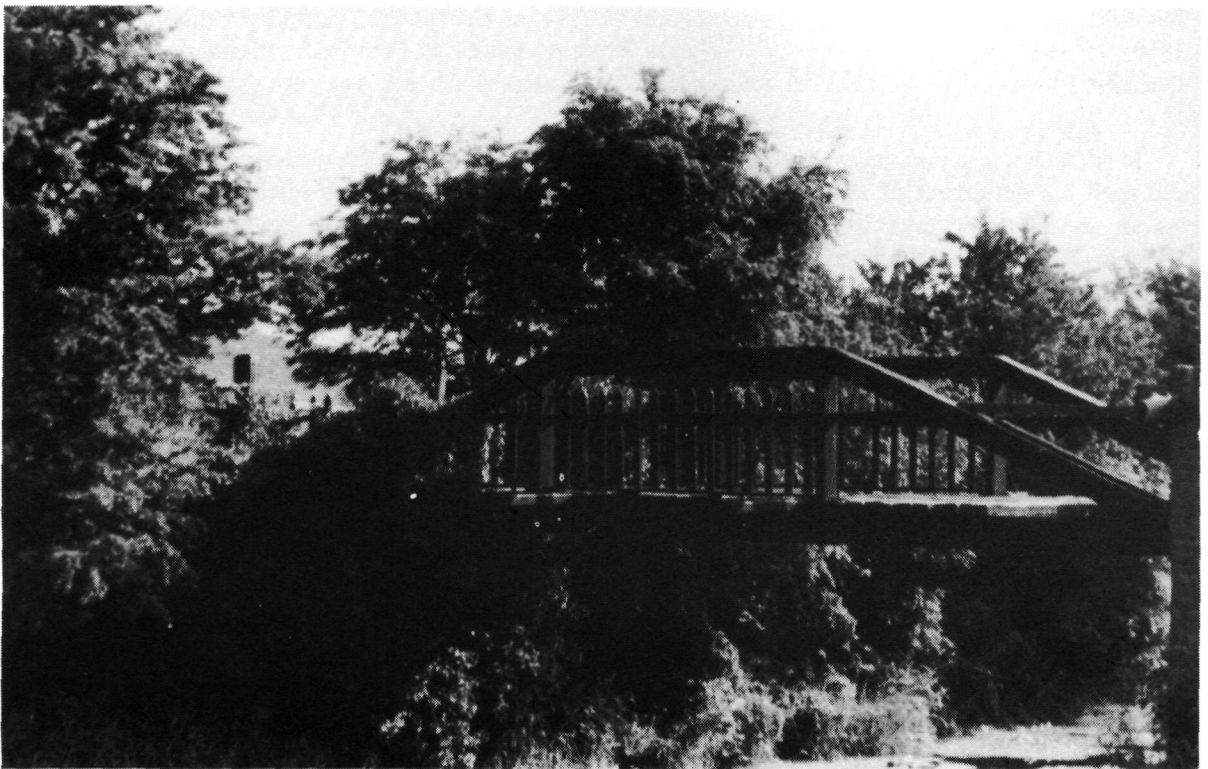
**ROBERT HARVEY** was born in Tandragee in 1889. He was educated at **Banbridge Academy**, where he was an outstanding musician, and later at **Marlborough Street, Teacher Training College, Dublin**. His first teaching appointment was as assistant teacher in **Crown Hall Primary School, Enniskillen** in 1910. In 1917 he moved to nearby **Moyglass Primary School** as **Principal**, remaining there until 1932. During the period 1910—1932 he was organist at **Rossorry Church** near Enniskillen.

In 1932 he was appointed **Principal of Poyntzpass No. 2 Public Elementary School**, a position he held until his retirement in 1954. Mr. Harvey was a man of a great many talents. As already noted he was an accomplished organist, with a great love of music. After moving to Poyntzpass he was organist in **Acton Parish Church** and at various times was organist in his native Tandragee. He was a skilled woodworker turning out work of a high order. Another great hobby of his, in which he involved many local youngsters, was making and flying kites, and it was not uncommon in the 1940's and 1950's to see several magnificent box kites hundreds of feet in the air above the village. An avid reader, he was a keen and knowledgeable gardener and an enthusiastic bee-keeper.

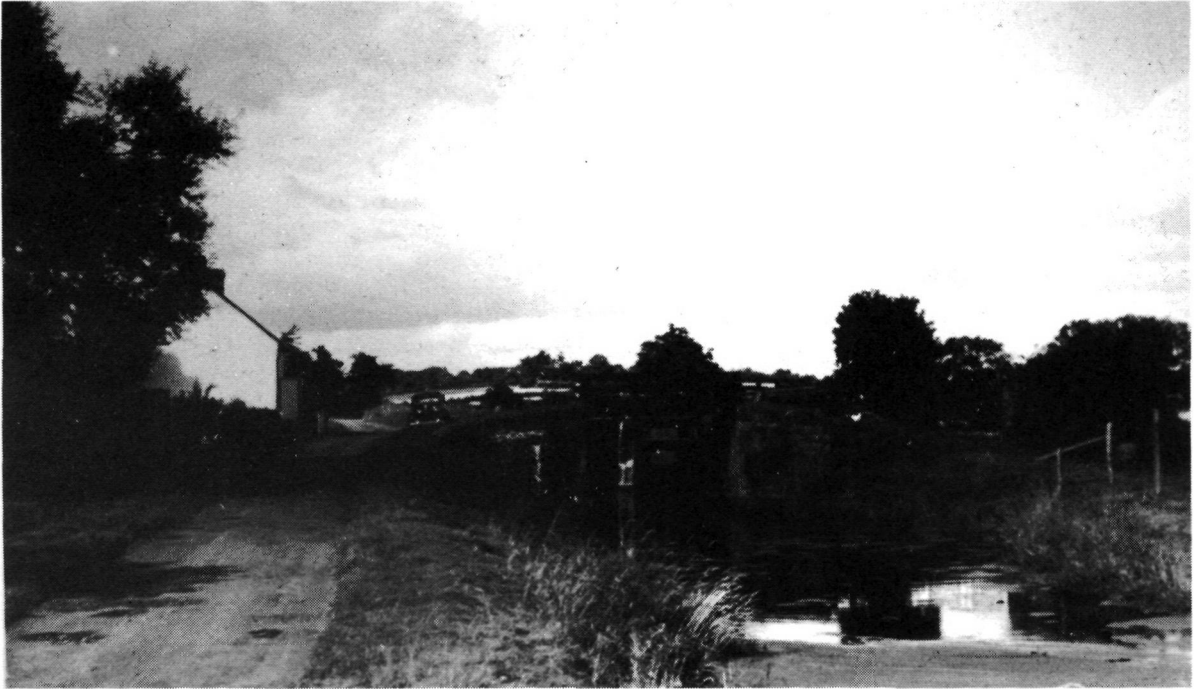
There are many of his pupils who can testify as to his love of mathematics for with his encouragement, many of them reached a standard in mathematics far above the normal for **Primary Schools**. Another of his passions, and that with which we are mostly concerned here, was photography. Over a period of many years, he became expert in the art of the photographer, developing and printing his pictures of locals and local scenes. Unfortunately very many have been lost but we are grateful however to be able to reproduce a few examples of his work here. Mr. Harvey died in 1967.



**Moody's Lockhouse, Poyntzpass.**



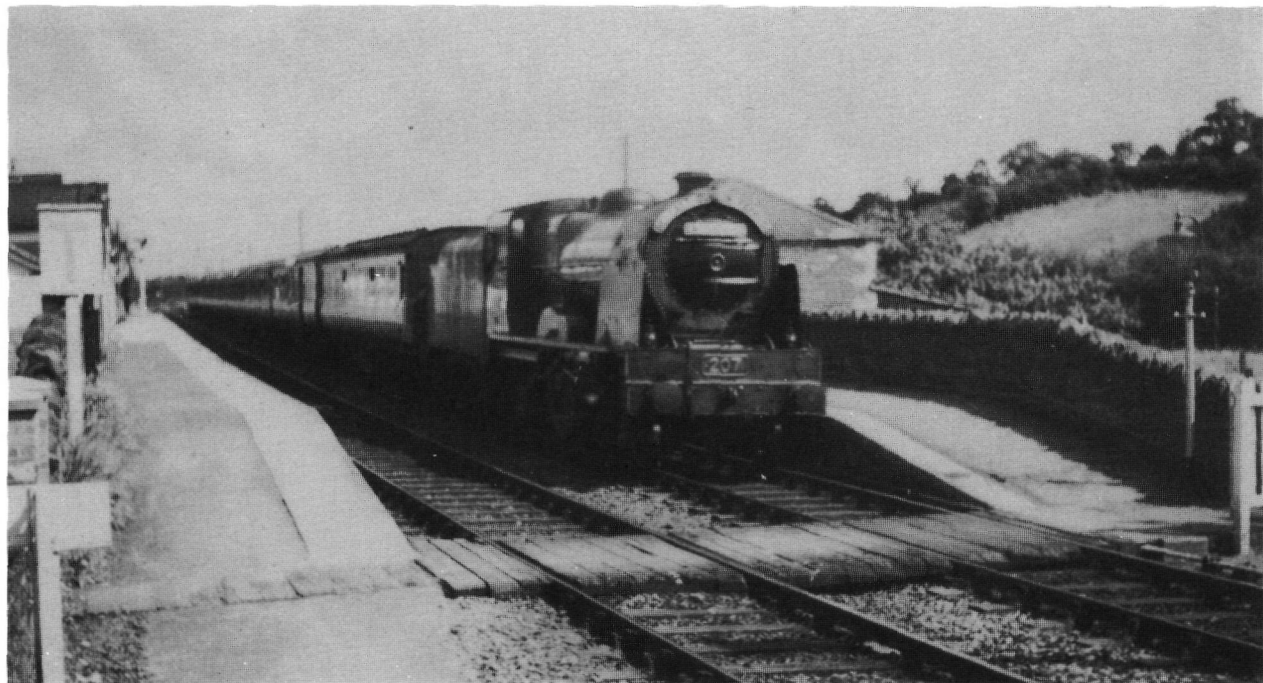
**The old Canal Bridge at Acton Lake.**



**McVeigh's Locks.**



**Acton Lake.**



Views of Poyntzpass Railway Station.





Views of the Newry Canal in the Poyntzpass area.

