

- 1879 Newry and Armagh absorbed into Great Northern Railway on September 13th.
- 1889 Rail disaster
- 1933 Passenger service ceased between Armagh and Goraghowood.
Armagh to Markethill closed completely.
- 1957 Goods traffic from Markethill to Goraghowood ceased.
- 1965 Goraghowood to Warrenpoint closed on January 14th.



Porter's house at Loughgilly



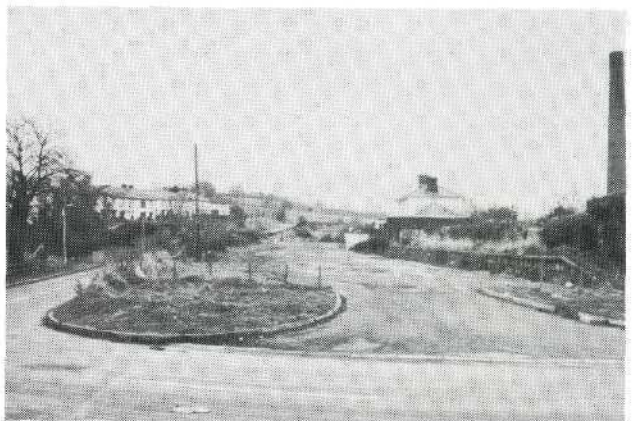
Entrance to Loughgilly Tunnel (exit is also visible)



Line approaching Markethill



Stationmaster's house at Loughgilly



Site of Markethill Station today